

2022 CASPER EXPLORATION UPDATE

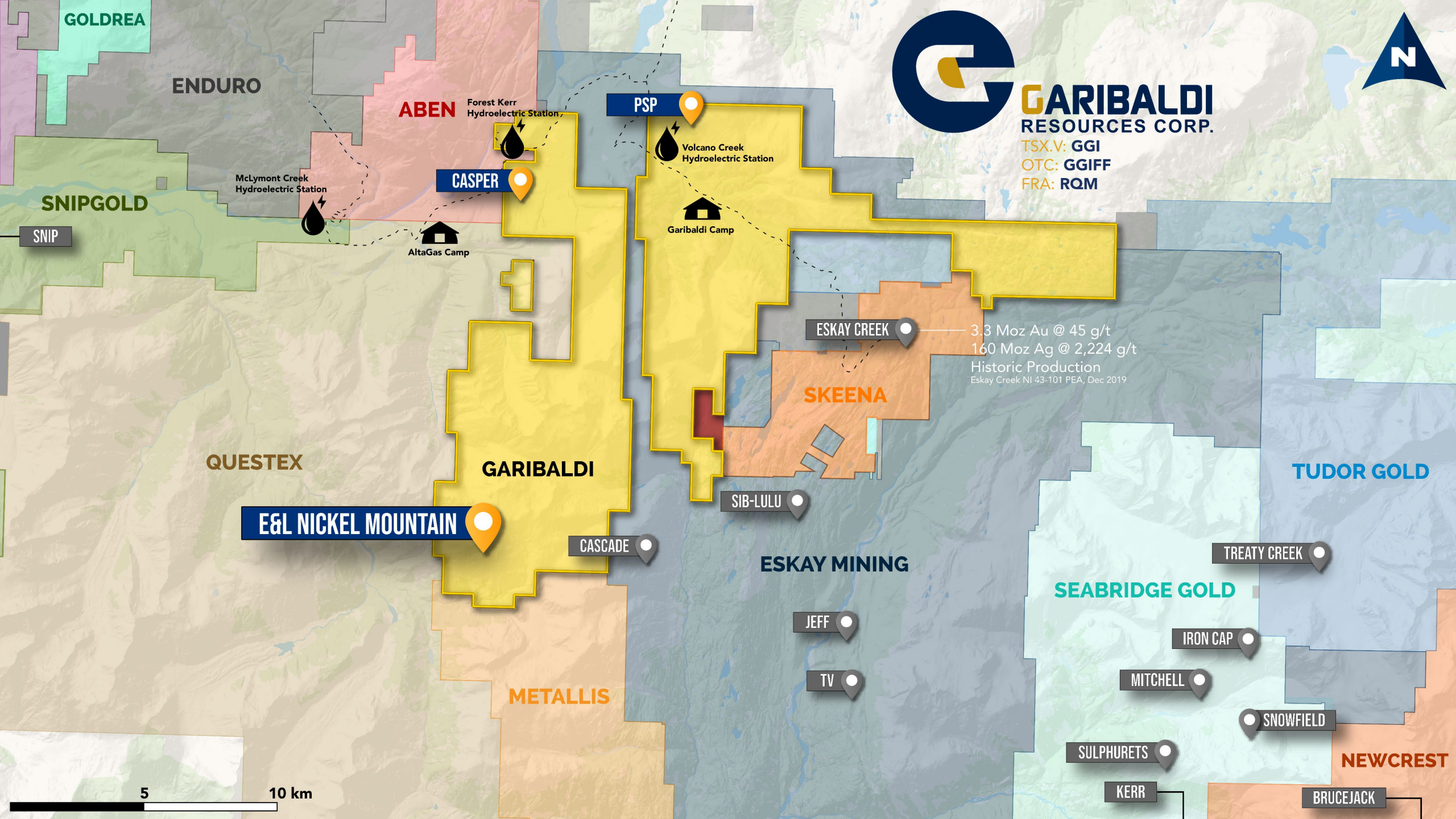


The footprint of the Casper mineralized system continues to grow along strike to the southeast, with 9 drill holes intersecting multiple mineralized veins and silicified volcanic rocks containing visible gold.

2021 drilling intercepted elevated gold mineralization within silicified volcanic rocks, expanding potential for gold mineralization beyond the Casper vein system to a broad package of volcanic rocks at depth.

Forest Kerr Camp





GARIBALDI
RESOURCES CORP.

TSX.V: GGI
OTC: GGIFF
FRA: RQM



ABEN

Forest Kerr Hydroelectric Station

PSP



Volcano Creek Hydroelectric Station

CASPER



McLymont Creek Hydroelectric Station



AltaGas Camp



Garibaldi Camp

ESKAY CREEK

3.3 Moz Au @ 45 g/t
160 Moz Ag @ 2,224 g/t
Historic Production
Eskay Creek NI 43-101 PEA, Dec 2019

SKEENA

GARIBALDI

E&L NICKEL MOUNTAIN



CASCADE



SIB-LULU



ESKAY MINING

JEFF



TV



TREATY CREEK



SEABRIDGE GOLD

IRON CAP



MITCHELL



SNOWFIELD



SULPHURETS



KERR



NEWCREST

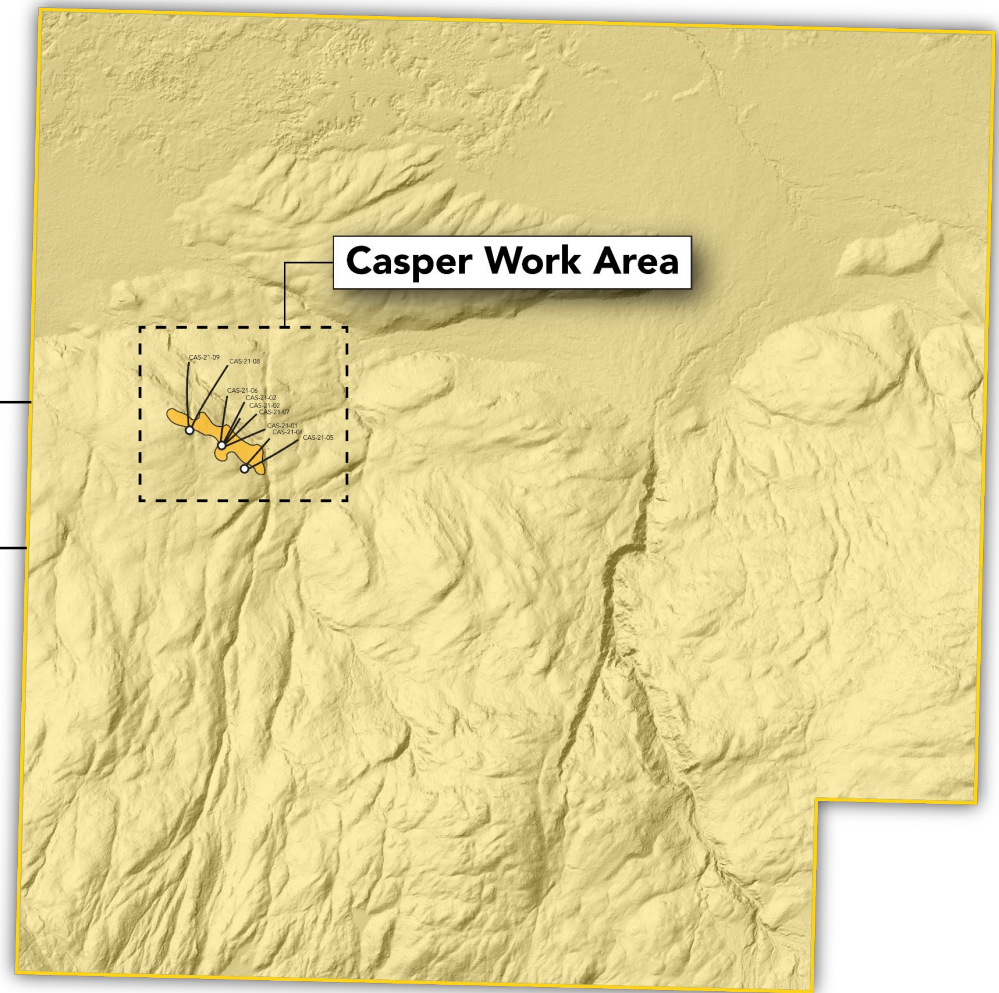
BRUCEJACK



Exploration at Casper has highlighted a 300 m-long mineralized surface vein system with rock samples yielding >1 g/t Au to up to 249 g/t Au within a 500 m-wide anomalous Au-in-soil zone.

9 drill holes intersected narrow veins and silicified volcanic rocks of variable thickness, both with intercepts containing visible gold.

**CASPER PROJECT
CLAIM BLOCK**



Gold-in-Soil

397000

398000

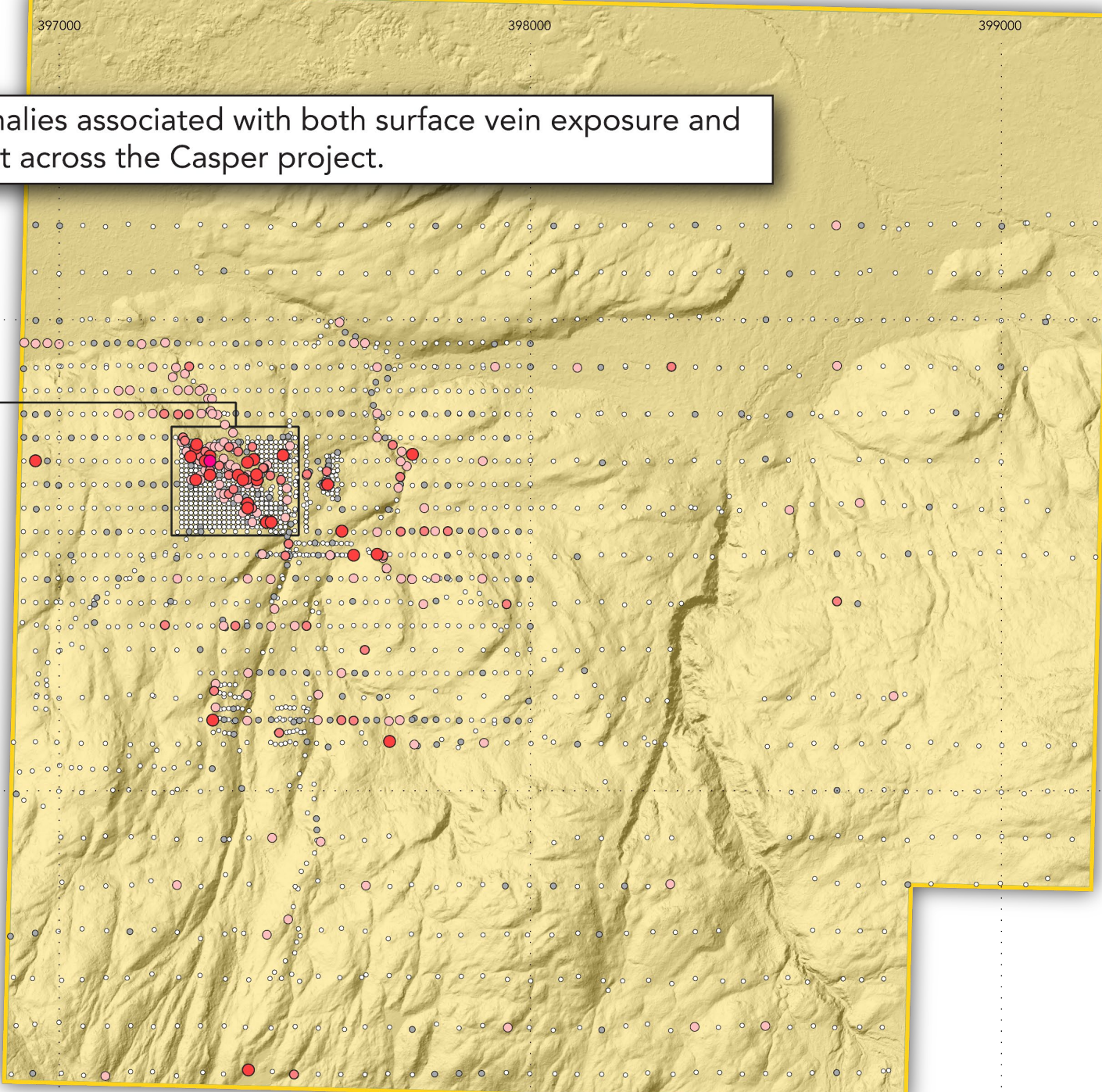
399000

40000



Multiple gold-in-soil anomalies associated with both surface vein exposure and untested areas are present across the Casper project.

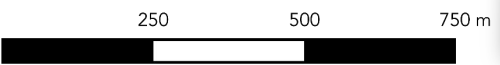
SURFACE VEIN SYSTEM



6285000

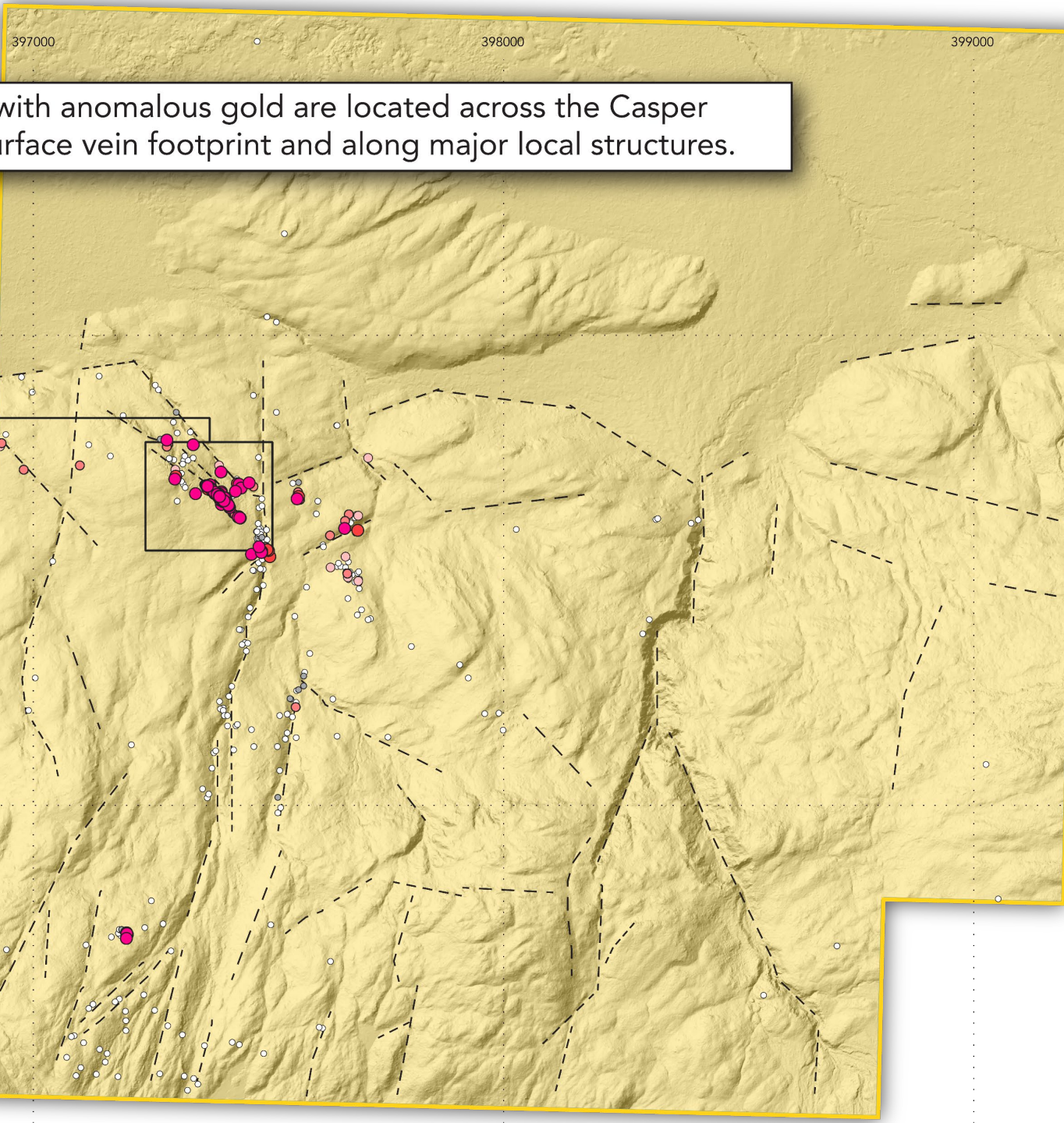
6284000

- >1000 ppb Au
- 100-1000 ppb Au
- 50-100 ppb Au
- 20-50 ppb Au
- 10-20 ppb Au
- <10 ppb Au



TSX-V: **GGI**
OTC: **GGIFF**
FRA: **RQM**

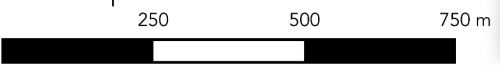
Gold in Rock Samples



Multiple rock chip samples with anomalous gold are located across the Casper prospect, both within the surface vein footprint and along major local structures.

SURFACE VEIN SYSTEM

- >1000 ppb Au
- 500-1000 ppb Au
- 100-500 ppb Au
- 50-100 ppb Au
- 20-50 ppb Au
- <20 ppb Au
- - suspected fault

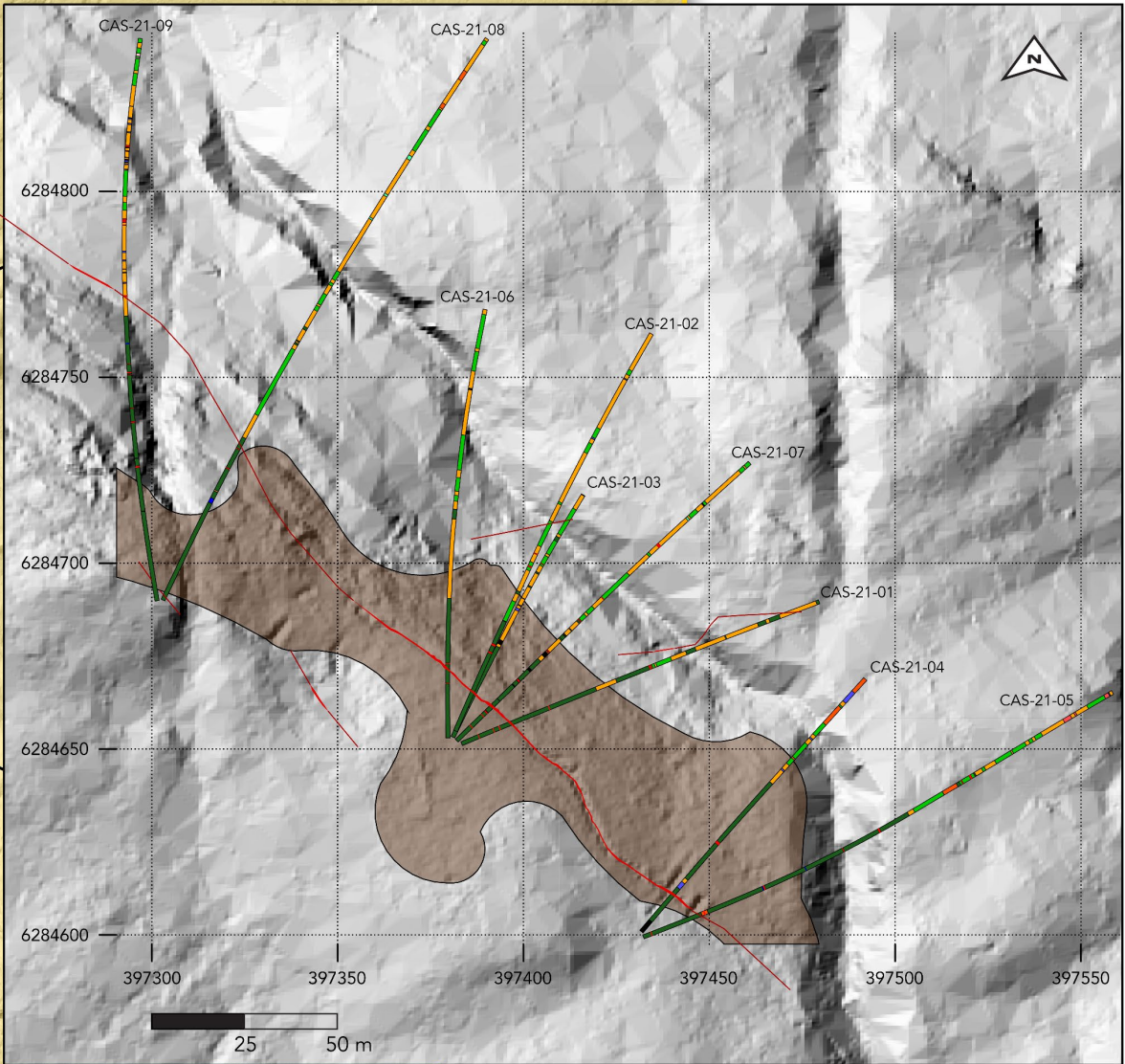
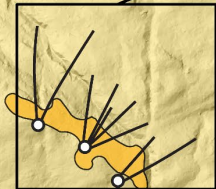


TSX-V: **GGI**
OTC: **GGIFF**
FRA: **RQM**

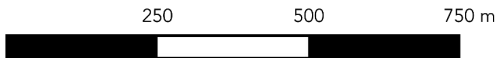
2022 CASPER PROJECT

2020 & 2021 DRILL HOLES

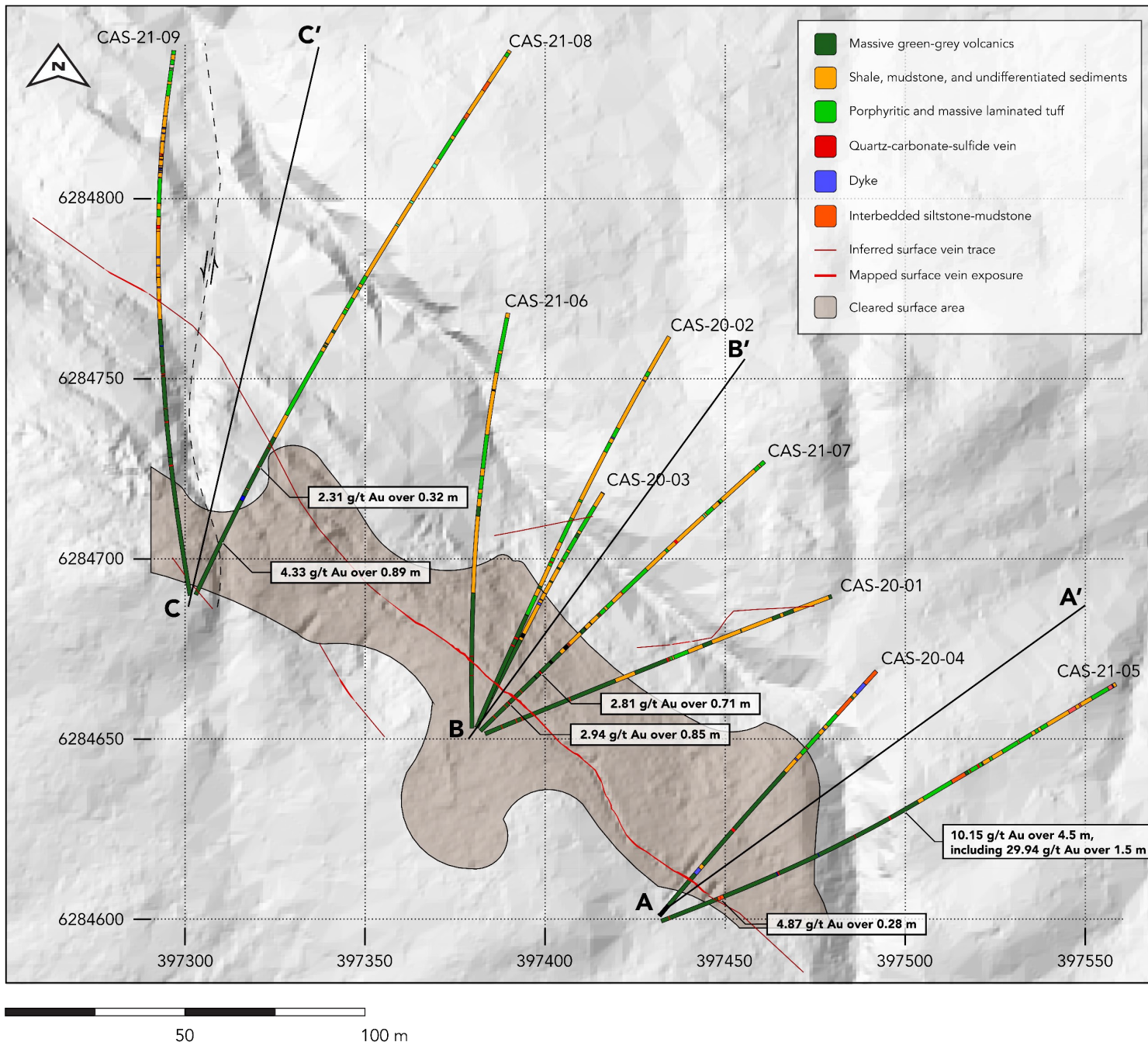
Continuous quartz-vein associated gold mineralization at surface, coupled with multiple intervals of quartz vein and silicified country rocks with elevated gold, encourage exploration for structurally controlled blow-outs of high-grade Au mineralization



TSX-V: **GGI**
OTC: **GGIFF**
FRA: **RQM**



CASPER 2020 & 2021 DRILL HOLES



Intersections from 2021 drilling yielded 10.15 g/t gold over 4.5 m including a 29.94 g/t gold intercept over 1.5 m in silicified volcanics with quartz veining in CAS-21-05

Mineralized intersections within silicified intervals, when combined with Au-bearing quartz veins, encourages further exploration. Further exploration is focused on determining the strike extent of mineralization and to search for structurally-controlled thicker intervals of high grade mineralization in wider zones of Au-bearing silicified country rock.

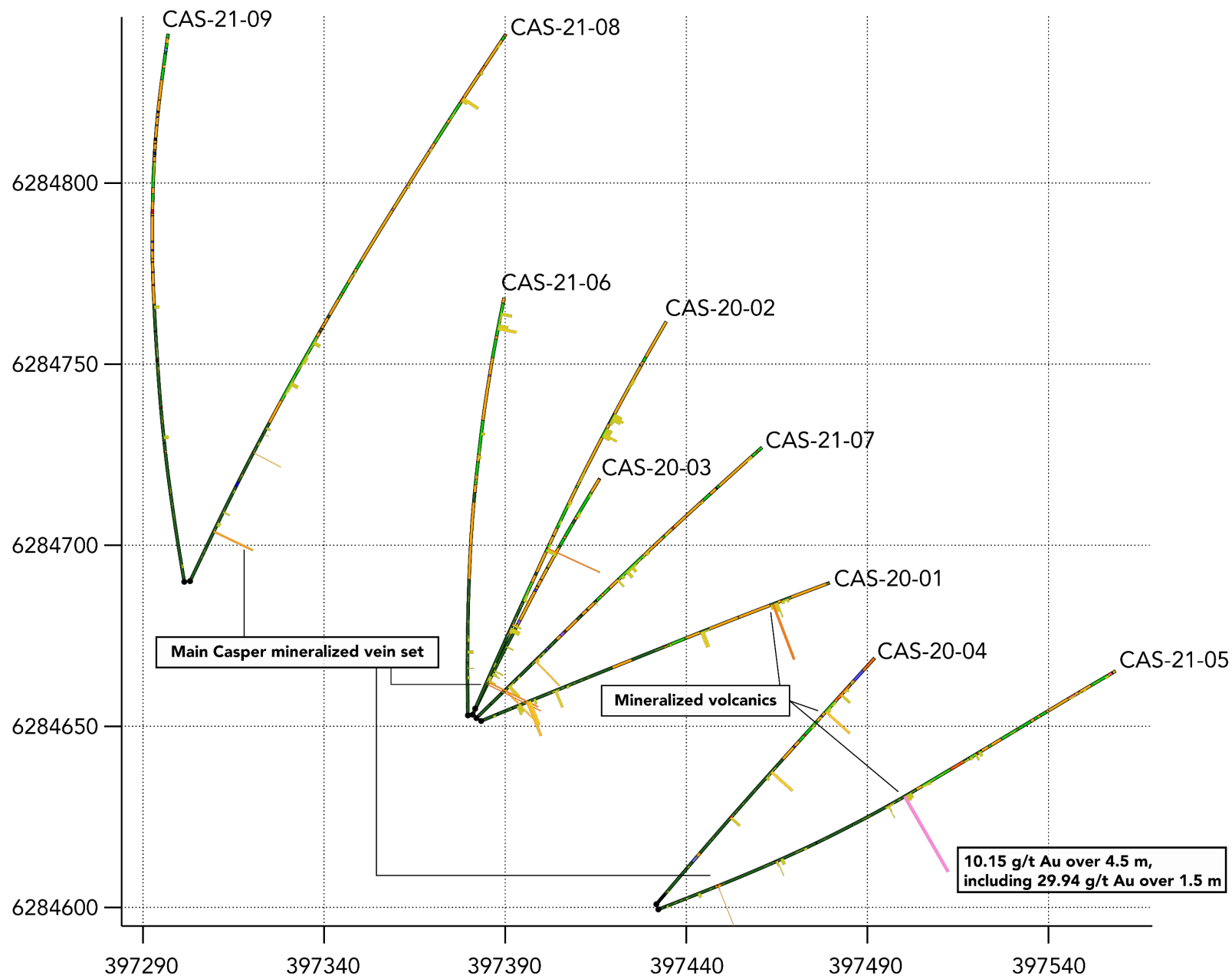


TSX-V: **GGI**
OTC: **GGIFF**
FRA: **RQM**

CASPER 2020 & 2021 DRILL HOLES - >0.01 g/t Au Histograms



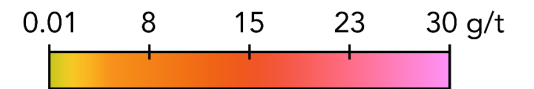
TSX-V: **GGI**
OTC: **GGIFF**
FRA: **RQM**



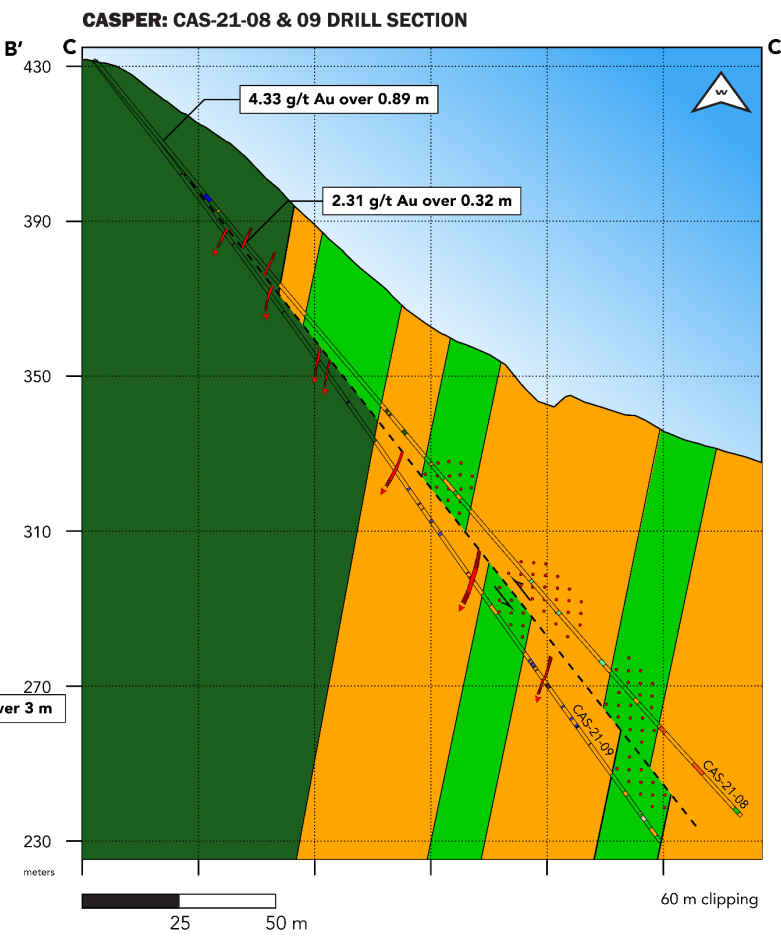
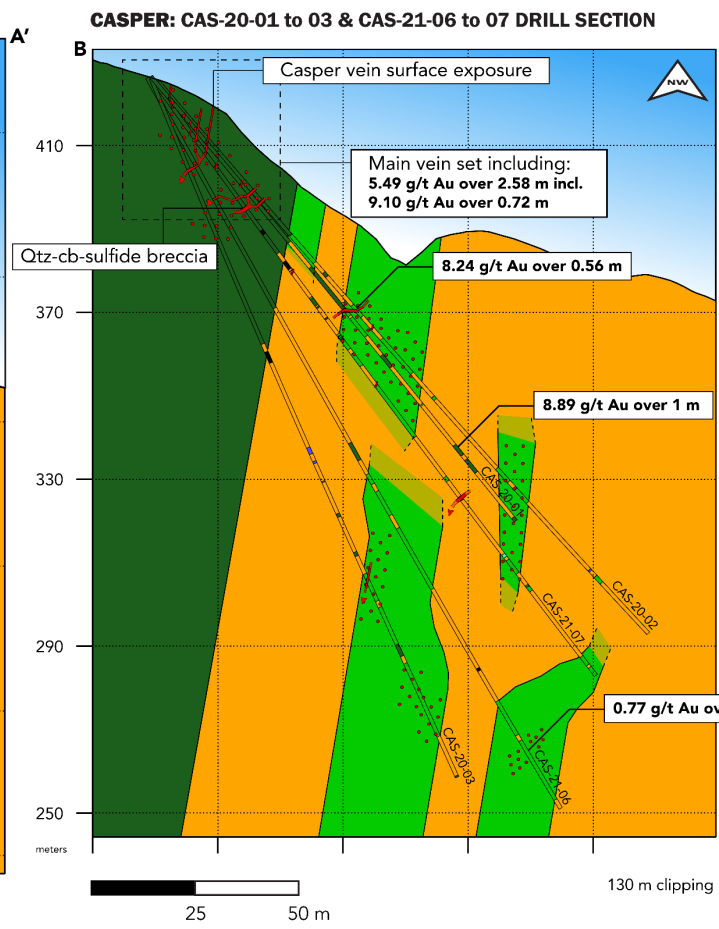
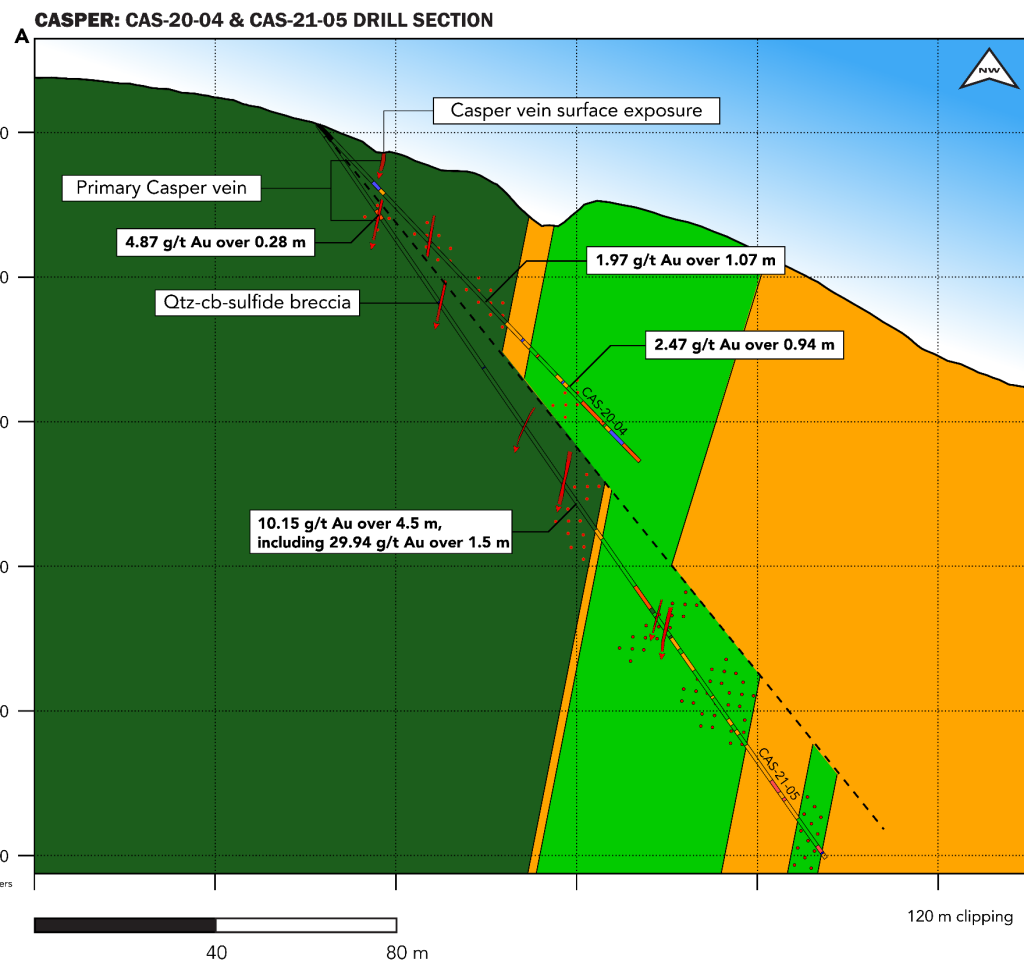
Lithology

- Massive green-grey volcanic rocks
- Shale, mudstone, and undifferentiated sedimentary rocks
- Porphyritic and massive laminated tuff
- Quartz-carbonate-sulfide vein
- Dyke
- Interbedded siltstone-mudstone

Au (g/t)



25 50 m



- Massive green-grey volcanic rocks
- Shale, mudstone, and undifferentiated sedimentary rocks
- Porphyritic and massive laminated tuff
- Quartz-carbonate-sulfide vein
- Dyke
- Interbedded siltstone-mudstone
- Zones of silicification
- Increasing Au grades containing visible gold, generally found within volcanics & tuff