

# Casper: 2025 Exploration Update

Peter C Lightfoot, Jules Lajoie, Jeremy Hanson, Joe Zamudio, and Steve Regoci

29th December, 2025



# 2025 goal was to demonstrate upside exploration potential at Casper



Presentation sequence

Exploration targeting for precious metal vein and epithermal style mineralization

October 2025 heliborne magnetic survey results highlight a tight trend of magnetic responses along strike from Casper Au-Ag quartz vein system

Geological data supports the interpretation of the new magnetic survey results

Footprint of exploration targets extends well beyond Casper existing drill holes

Drill permits and camp in place; field season is short; next step is to do the work and make a new discovery



# Why Casper?

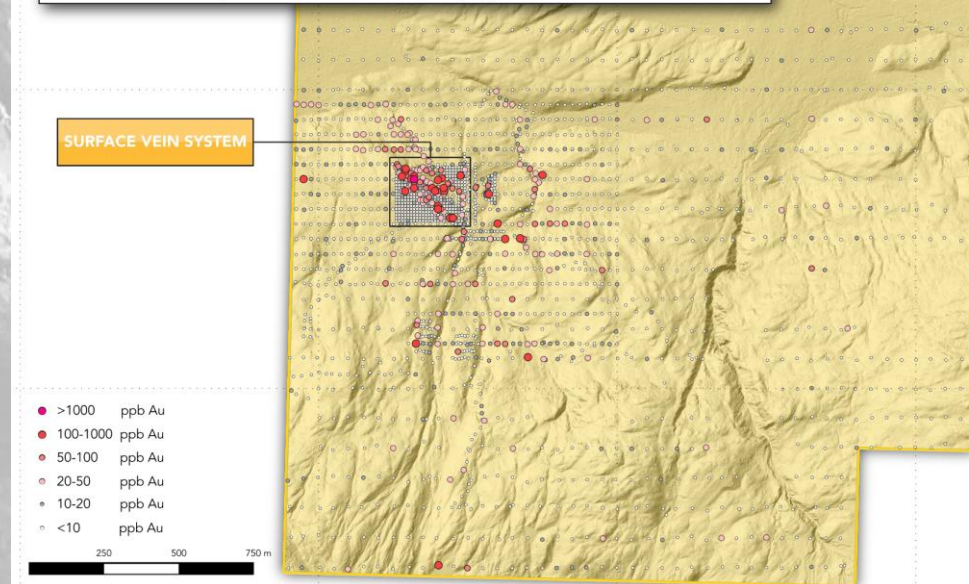
**Multiple gold anomalies in soil associated with quartz vein alteration zone**

**Continuous intervals of gold mineralization along boundary between argillite and felsic volcanic rocks with potential to identify widened zones of mineralization where structures inferred from LiDAR intersect**

\* Details available from the web page of Garibaldi Resources

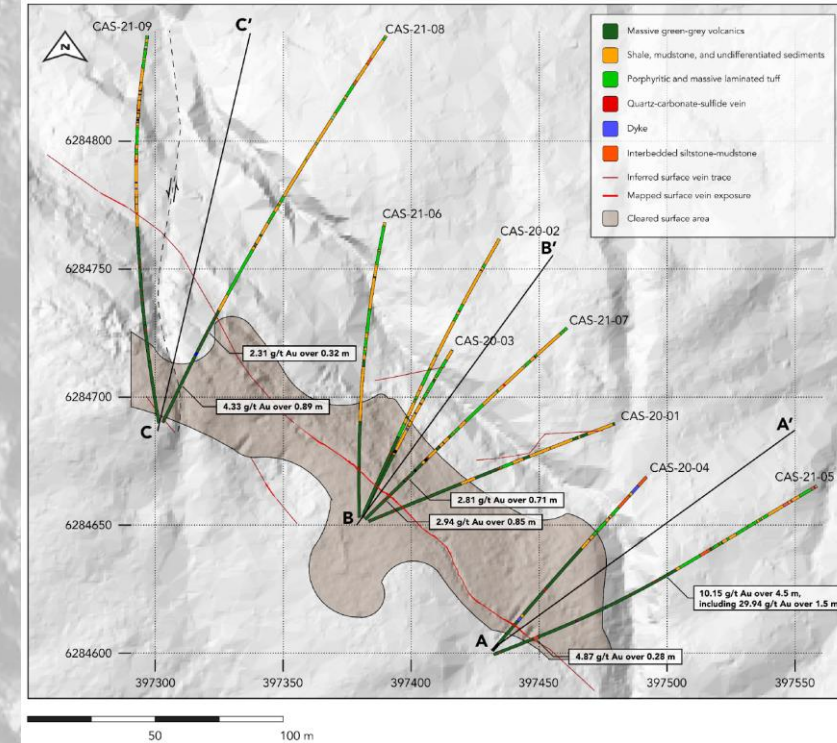
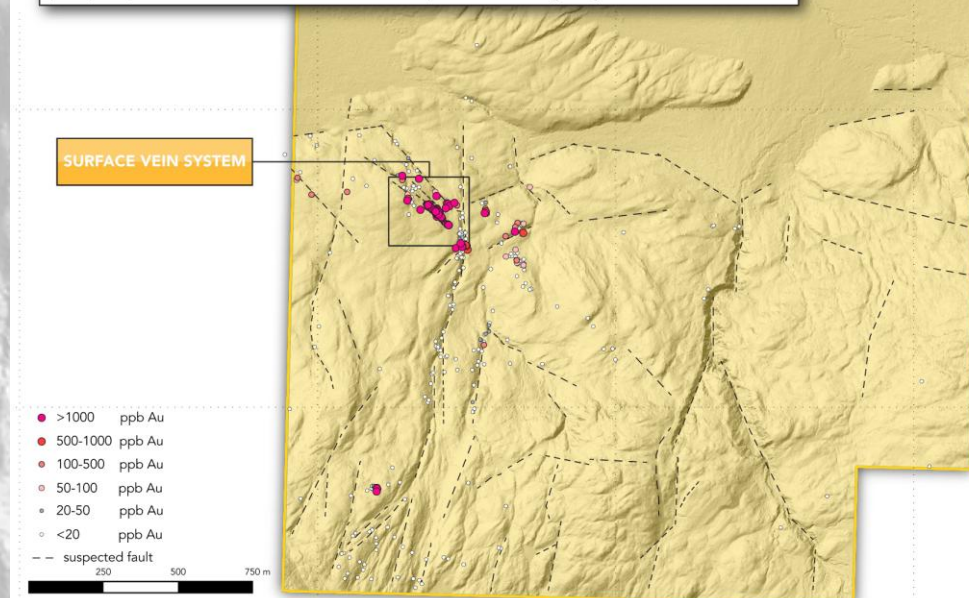
## Gold-in-Soil

Multiple gold-in-soil anomalies associated with both surface vein exposure and untested areas are present across the Casper project.



## Gold in Rock Samples

Multiple rock chip samples with anomalous gold are located across the Casper prospect, both within the surface vein footprint and along major local structures.



**Drill intersections on a fraction of the targets yielded 10.15 g/t gold over 4.5m including 29.94 g/t gold intercept over 1.5m in quartz vein cutting silicified volcanic rocks**

**Continuous multi-interval quartz-vein associated gold mineralization along boundary between argillite and felsic volcanic rocks with elevated Au and potential to identify structural blow-outs and mineralization source**



Interpretation of LiDAR bare-earth model reveals at least 3 sets of intersecting structures of which one is parallel to the trend of the gold mineralization in outcrop and drill core  
Fault intersections along a >1km NW-SE trend may control wider zones of mineralization along multiple trends

Casper

Potential for concentration of precious metal mineralization in areas where LiDAR data support structural intersections (examples shown)

0 0.1 0.2 km



Tilt angle derivative product from high-resolution airborne magnetic survey.

Casper is associated with a geological boundary between black shales and felsic volcanic rocks within a magnetic domain

Magnetic response following the structural fabric of the mineralized quartz vein system will guide exploration along strike

0 0.1 0.2 km








Casper

Multiple outcrop samples with elevated gold content in areas without follow-up drilling

Potential for thicker zones of gold mineralization

 Outcrop samples with elevated Au grades are targets for follow-up

Au (g/t)


-  <0.05
-  0.05-<0.1
-  0.1-<0.5
-  0.5-<1
-  1-<5
-  5-249

0 0.1 0.2 km



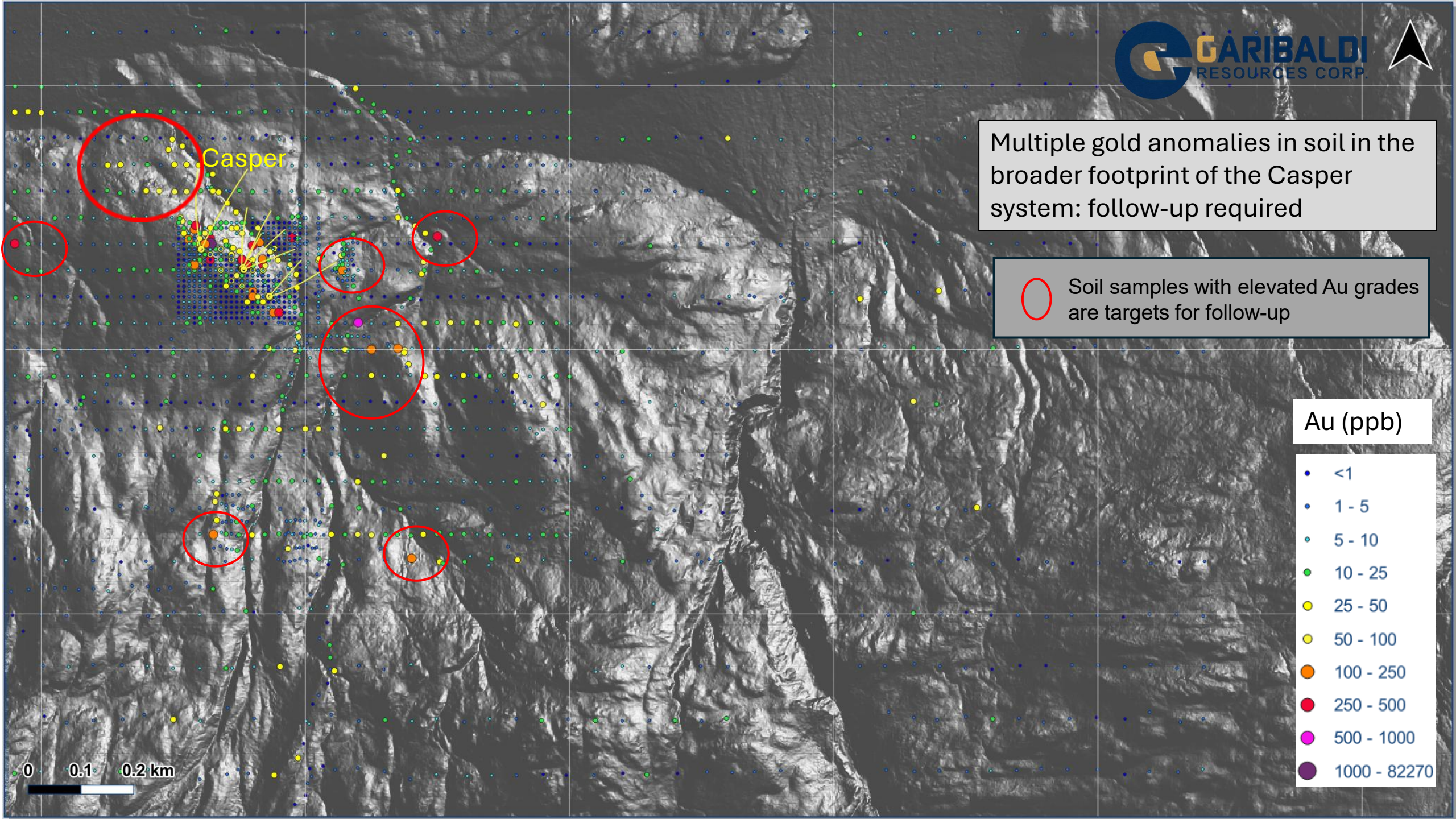


Multiple gold anomalies in soil in the broader footprint of the Casper system: follow-up required

 Soil samples with elevated Au grades are targets for follow-up

Au (ppb)

- <1
- 1 - 5
- 5 - 10
- 10 - 25
- 25 - 50
- 50 - 100
- 100 - 250
- 250 - 500
- 500 - 1000
- 1000 - 82270



Casper

0 0.1 0.2 km



Forest Kerr

Thank you!

## Forward Looking Statements

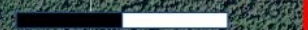
*This document contains forward-looking information, including statements relating to the “expectations”, “intentions” or “plans” of the company. Such information involves known and unknown risks, uncertainties and other factors - including availability of funds, the results of financing and exploration activities, the interpretation of drilling results and other geological data, project cost overruns or unanticipated costs and expenses and other risks identified by the company in its public securities filings - that may cause actual events to differ materially from current expectations. Readers are cautioned not to place undue reliance on these forward-looking statements, which speak only as of the date of this document.*

*This document is not and does not constitute an offering memorandum under securities laws.*

*Jeremy Hanson, P.Geo., VP Exploration for Garibaldi Resources Corp., a Qualified Person as defined by NI-43-101, has supervised the preparation of, and has reviewed and approved of the disclosure of information in this presentation.*

Casper

0 0.2 0.4 km

A horizontal scale bar with three segments, labeled '0', '0.2', and '0.4 km' from left to right.